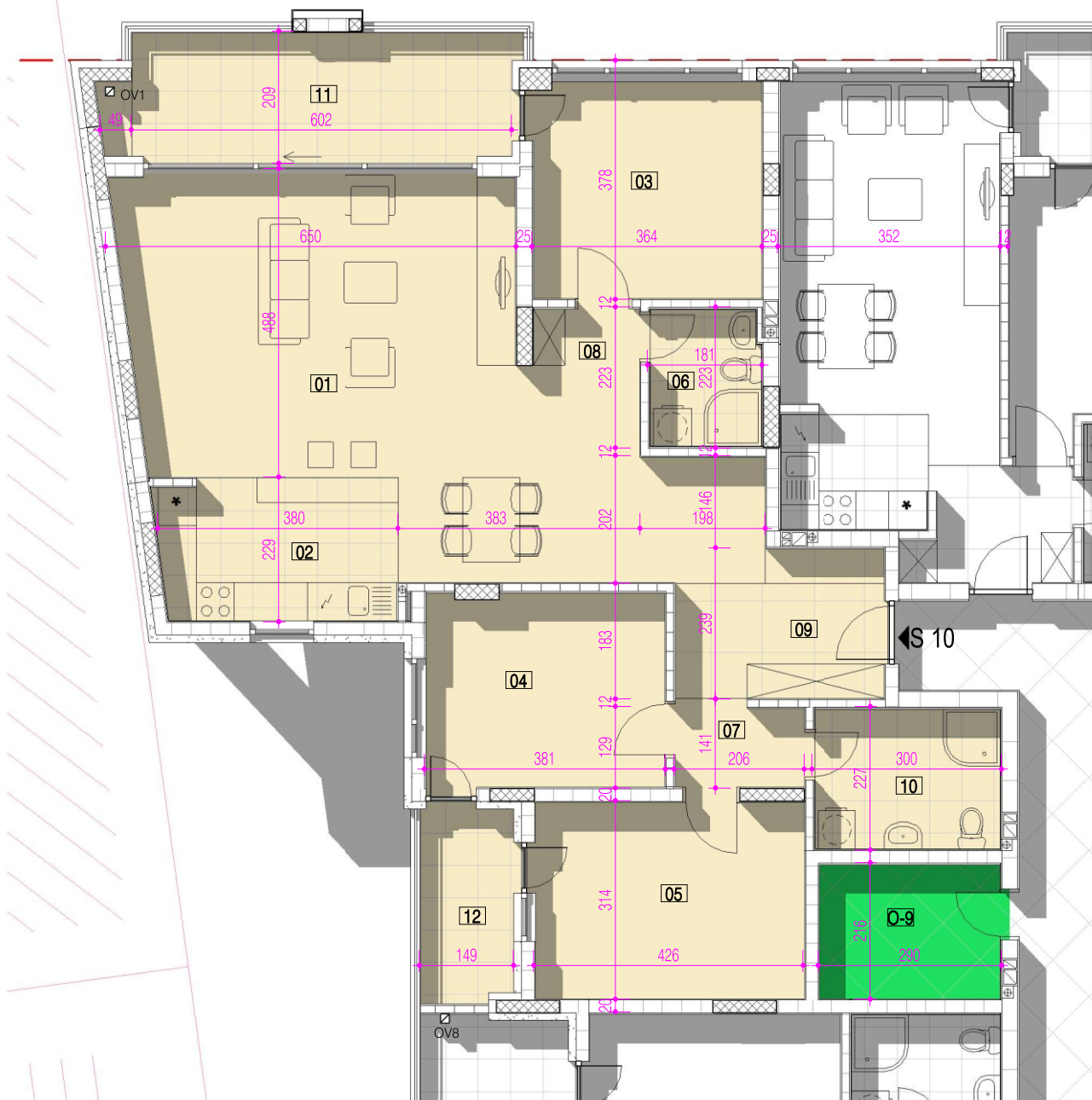


TIPSKI STAN - SPRAT I, II

S 10



Zgrada Jovi, Dositeja Obradovića 32-36

Stan br. 10		
01	Dn. soba i trpez.	43.12m ²
02	Kuhinja	8.45m ²
03	S. soba	12.27m ²
04	S. soba	11.53m ²
05	S. soba	13.14m ²
06	Kupatilo	3.75m ²
07	Deganžman	2.73m ²
08	Deganžman	1.75m ²
09	Ulazni hol	7.05m ²
10	Kupatilo	6.50m ²
		110.08m ²
11	Terasa	13.09m ²
12	Terasa	4.46m ²
		17.55m ²
		Ukupno 127.62m²

NAPOMENA : MOGUĆNOST PRIDODAVANJA OSTAVE O-9